



Solid, simple and smart:  
advanced reliability in compressed air

**DRB 20-34, DRA 10-20 IVR/DRB 20-34 IVR,**

**DRA 10-15 IVR PM/DRB 20-30 IVR PM**

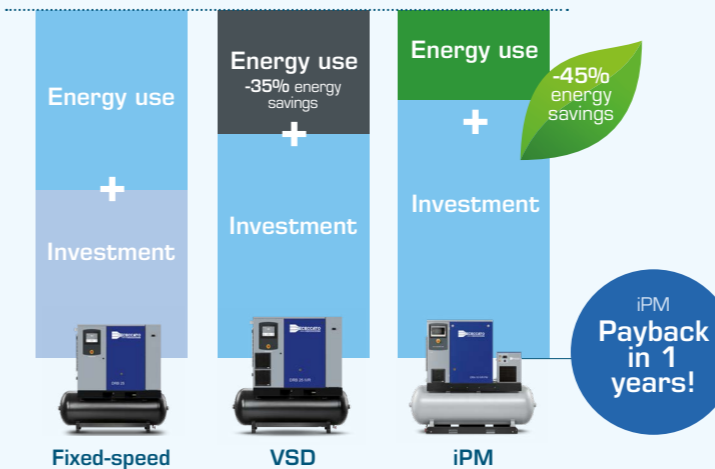


How do you make a best-in-class compressor range even better? By adding unmatched efficiency. Ceccato's smallest screw compressors, the DRB 20-34 fixed-speed and the DRA 10-20 IVR/DRB 20-34 IVR variable speed already gave you a lifetime of premium performance. The new DRA 10-15 IVR PM/DRB 20-30 IVR PM and its iPM technology now offer you double-digit energy savings and a smaller environmental footprint. Compact and quiet, all three models can be used in your compressor room or at the point of use, as a primary or as a complementary compressor. So no matter how tough your requirements, our most versatile rotary screw compressor is sure to meet them.



Payback in 1-2 years

break-even point after 1 year



## iPM for major energy savings

Energy takes up more than 70% of the cost of owning and operating a compressor. Ceccato's iPM technology was developed to give you significant energy savings. While traditional compressors only have one speed (100% on), iPM compressors adjust their motor speed to follow the fluctuating air demand that most production environments have. As a result, the DRA 10-15 IVR PM/DRB 20-30 IVR PM delivers energy savings of up to 45%. That means you can earn back the extra cost of the DRA 10-15 IVR PM/DRB 20-30 IVR PM [compared to a fixed-speed unit] in just 1 year. How's that for an easy decision?



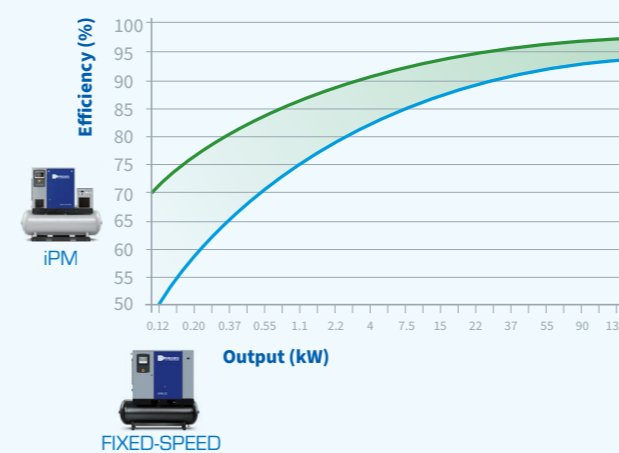
### Performance

- Up to 45% energy savings with DRA 10-15 IVR PM/ DRB 20-30 IVR PM motor [compared to fixed-speed].
- Up to 17% improved energy efficiency with new iPM technology [compared to VSD].
- Reliable operation, even in ambient temperatures up to 46°C.
- The IP54-enclosed drive train safeguards performance in dusty and humid conditions.
- Direct drive VSD and iPM drive ensure reliable performance.
- Sound levels as low as 62 dB(A).
- Advanced Airlogic<sup>2</sup>T touchscreen controller maximizes performance and efficiency.



### Flexibility

- From 7-26 kW with a pressure range between 4 and 13 bar.
- Available with iPM, Variable Speed Drive and fixed-speed drive train technology.
- Floor-mounted or tank-mounted models, with or without integrated dryer.
- Multiple tank sizes available.
- Can be installed in your compressor room or at the point of use.
- Flexible customization with wide range of options.



## The bigger benefit of a small iPM compressor

Does energy efficiency make less of a difference in small compressors? On the contrary! iPM technology delivers its biggest energy savings [compared to fixed-speed models] in smaller compressors. That is why you can achieve return on your iPM investment after just 1 year.

## A versatile range



DRB 20-34 fixed-speed

- Superior technology compared to belt drive thanks to in-house air end design and gearbox technology.
- Built for long duty cycles and continuous operation.
- IP55, class F IE3 motor, ideal for operation in tough conditions.
- Robust and silent design.
- Payback within 2 years for upgrade from belt drive to gear drive.



+ TOC\* SAVINGS PERFORMANCE  
DRA 10-20 IVR/ DRB 20-34 IVR variable speed

- Direct-driven transmission.
- Designed for variable load conditions, saving up to 35% compared to fixed-speed.
- Improved Specific Energy Requirement.
- Payback within 2 years for upgrade from fixed-speed to VSD.



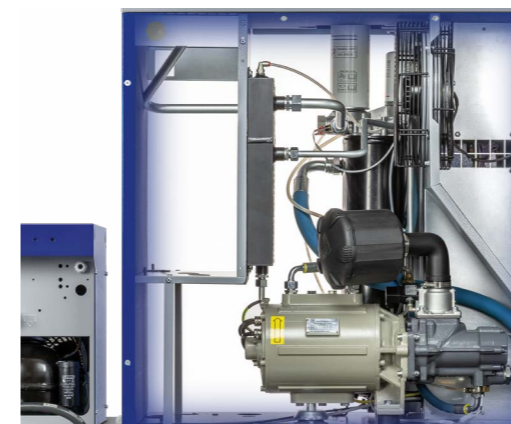
+ TOC\* SAVINGS PERFORMANCE SERVICEABILITY LIFETIME  
DRA 10-15 IVR PM/ DRB 20-30 IVR PM

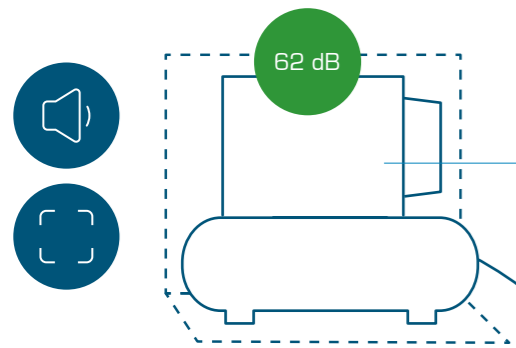
- Up to 17% additional energy savings compared to traditional VSD technology.
- Ideal for highly efficient operation during fluctuating air demand.
- Energy savings of up to 45% compared to fixed-speed.
- IP54, class H IE4 motor, oil-cooled for top performance.
- New design of air end and motor connection facilitates drive train maintenance.
- Payback after approximately 1 year for upgrade from fixed-speed to iPM.

## State-of-the-art engineering

At the heart of our model line-up, you will find best-in-class compression technology, designed and built for a lifetime of top performance. Just take a look at the DRA 10-15 IVR PM/DRB 20-30 IVR PM's drive train. Rated IE4 efficiency and class H motor windings, its maintenance-free interior permanent magnet motor gives you optimal efficiency in the hottest conditions:

- High efficiency credit to its direct drive, IE4 permanent magnet motor and high turn-down ratio
- High reliability resulting from its oil cooling and class H motor windings
- Easy maintenance and low downtime thanks to the new drivetrain coupling system



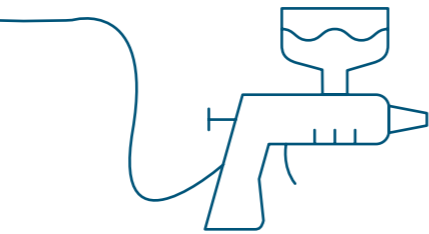


## The compact all-in-one compressed air system...

Ceccato compressors are built to save space. And if you choose a tank-mounted model, you get an all-in-one compressed air system with the smallest footprint. For maximum air quality, a refrigerant dryer can be fully integrated.

## ... That can be installed at the point of use

Thanks to their quiet operation and integrated design, our small rotary screw units can be installed on your production floor. That means you don't need a separate compressor room and can save on floor space, piping, and installation costs. You can reduce your investment and operational costs as well, as you can operate the machine at a lower pressure setting and eliminate pressure drops throughout your piping network.



€  
Save on investment costs

- ✓ Minimal pressure drops
- ✓ Higher FAD

€  
Save on operational costs

## Premium compression technology

### Oil-cooled IE4 efficiency and class h interior permanent magnet (ipm) motor:

Maintenance free; includes innovative oil-cooling technology for optimal performance in up to 46°C.

### IP54 electrical cubicle:

Can withstand up to 60°C with the highest standards in EMC performance.



### In-house designed compression element:

Gives you best-in-class Free Air Delivery and Specific Energy Requirement.

**Drive train:** IE4 oil-cooled motor for optimal cooling performance. All-new conical coupling design for fast maintenance on the drive train.

### Oversized coolers and oil vessel:

For improved performance.

## Advanced monitoring, control & connectivity

The state-of-the-art Airlogic<sup>2</sup>T touchscreen controller – included as standard – gives you on-screen and remote insight into the performance of your compressor:



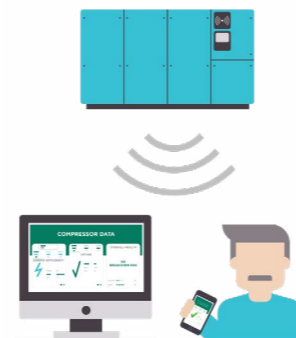
- Large 4.3" full-color touchscreen display
- 30+ languages
- Warning indications and shutdown alarms
- Service status and schedule indication
- Visualisation of running conditions over LAN network
- Compressor data analysis over ICONS

## ICONS

### Increased uptime, powered by ICONS

With the Intelligent CONnectivity System (ICONS), you get data and insights from your machines delivered to your computer, tablet or smartphone.

- Increase the reliability of your machine by identifying problems before they become a threat to the continuity of your production.
- Analyze and optimize your energy consumption and CO<sub>2</sub> emissions.
- Receive high-quality energy reports ensuring the ISO50001 compliance of your site.

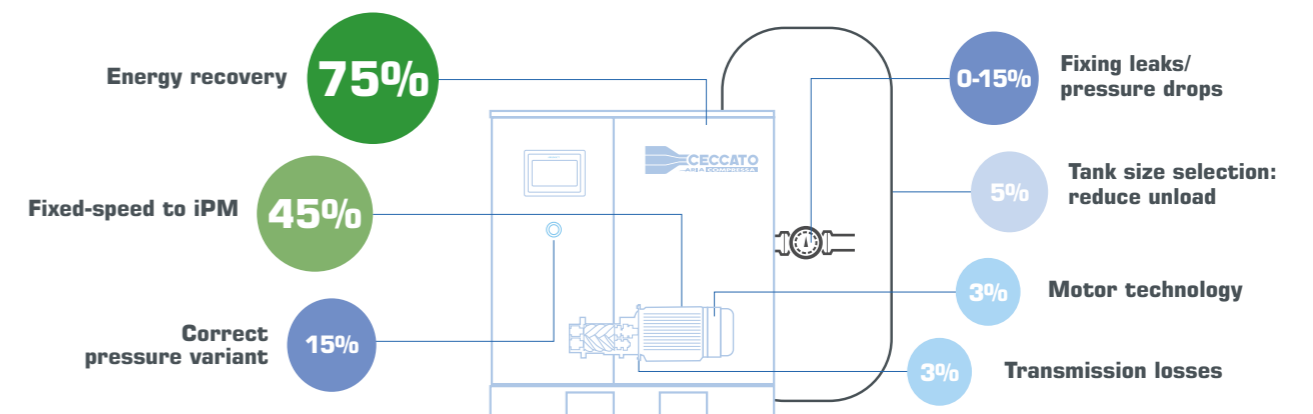


## A range of options

- Energy recovery
- Water separation drain
- Electronic water drain
- Heavy duty air inlet filter
- Silencing baffle
- Canopy heater
- 8000H Oil
- Line filter G
- Food grade oil
- Opt.econtrol 6I

## Maximize your energy savings

Energy is by far the biggest cost of owning and operating a compressor. Luckily, there are many options to minimize the energy consumption of your air system. Technologies such as energy recovery can have a huge impact on your bottom line and your environmental footprint, with energy savings of up to 75%. A holistic view of your compressed air system is key. It starts with the selection of efficient technologies when buying your compressor. But it doesn't end there. Monitoring and analyzing your air system as you use it will often reveal optimization opportunities. Your Ceccato representative can help you find those savings.



# Technical specifications

## DRB 20-34

Model	Max. working pressure bar	Reference working pressure bar	Free Air Delivery @ reference conditions*			Motor power		Noise level ** db(A)	Cooling air flow m³/h	Weight			
			m³/h	l/min	cfm	kW	hp			Pack	FF	FF TM 500L	
												kg	
DRB 20	7.5	7.0	162	44.9	95	15	20	67	2484	330	375	550	
	8.5	8.0	152	42.3	90								
	10	9.5	136	37.8	80								
	13	12.5	117	32.4	69								
DRB 25	7.5	7.0	199	55.3	117	18.5	25	68	3492	355	405	580	
	8.5	8.0	189	52.4	111								
	10	9.5	175	48.7	103								
	10	9.5	137	38.0	80								
DRB 30	7.5	7.0	231	64.3	136	22	30	69	3492	370	420	595	
	8.5	8.0	224	62.4	132								
	10	9.5	198	54.9	116								
	13	12.5	167	46.5	99								
DRB 34	7.5	7.0	253	70.2	149	26	35	71	6516	385	435	610	
	8.5	8.0	239	66.4	141								
	10	9.5	224	62.1	132								
	13	12.5	196	54.4	115								

## DRA 10-20 IVR/DRB 20-34 IVR

Model	Min. working pressure bar	Reference working pressure bar	Motor power		Min. FAD*		Free Air Delivery @ reference conditions* Max. FAD*						Noise level ** db(A)	Cooling air flow m³/h	Weight (kg)							
			kW	hp	7 bar		7 bar		9.5 bar		12.5 bar				Pack	FF	Pack TM		FF TM			
					m³/h	l/min	m³/h	l/min	m³/h	l/min	m³/h	l/s					270 L	500 L	270 L	500 L		
DRB 10 IVR	4	13	7.5	10	16.2	4.5	74.9	20.8	64.8	18.0	51.0	14.2	62	2200	227	-	319	393	353	427		
DRB 15 IVR	4	13	11	15	16.2	4.5	111.6	31.0	90.0	25.0	73.8	20.5	64	2200	243	-	335	409	371	445		
DRB 20 IVR	4	13	15	20	16.2	4.5	135.7	37.7	113.8	31.6	85.3	23.7	65	2200	246	-	338	412	445	465		
DRB 25 IVR	4	13	18.5	25	46.8	13.0	200.2	55.6	181.8	50.5	136.1	37.8	70	3492	325	375	-	-	-	550		
DRB 29 IVR	4	13	22	30	46.8	13.0	231.1	64.2	194.8	54.1	176.0	48.9	71	3492	330	385	-	-	-	560		
DRB 34 IVR	4	13	26	35	46.8	13.0	249.5	69.3	224.3	62.3	195.8	54.4	72	6516	350	400	-	-	-	575		

## DRA 10-15 IVR PM/DRB 20-30 IVR PM

Model	Min. working pressure bar	Reference working pressure bar	Motor power		Min. FAD*		Free Air Delivery @ reference conditions* Max. FAD*						Noise level ** db(A)	Cooling air flow m³/h	Weight (kg)							
			kW	hp	7 bar		7 bar		9.5 bar		12.5 bar				Pack	FF	Pack TM		FF TM			
					m³/h	l/min	m³/h	l/min	m³/h	l/min	m³/h	l/s					270 L	500 L	270 L	500 L		
DRB 10 IVR PM	4	13	7.5	10	16.6	4.6	76.3	21.2	66.2	18.4	51.0	15.4	62	2200	208	-	310	340	350	380		
DRB 15 IVR PM	4	13	11	15	16.6	4.6	115.2	32.0	94.0	26.1	75.6	21.0	64	2200	218	-	320	350	360	390		
DRB 20 IVR PM	4	13	15	20	40.3	11.2	180.0	50.0	153.4	42.6	130.3	36.2	65	2484	310	355	-	-	-	530		
DRB 25 IVR PM	4	13	18.5	25	40.3	11.2	210.2	58.4	181.4	50.4	143.3	39.8	70	3492	325	375	-	-	-	550		
DRB 30 IVR PM	4	13	22	30	40.3	11.2	241.6	67.1	204.8	56.9	185.0	51.4	71	3492	330	385	-	-	-	560		

\* Unit performance measured according to ISO1217, Annex C, latest edition

\*\* Noise level measured according to ISO2151 2004.

## Dimensions

	DRA 10-20 IVR			DRB 20-34		DRB 25-34 IVR	
	DRA 10-15 IVR PM			DRB 20-30 IVR PM			
	Dimensions (mm)			Dimensions (mm)			
	Length	Width	Height	Length	Width	Height	
FM	995	655	1045	1200	835	1220	
FM+Dryer	-	-	-	1450	835	1220	
TM 270L	1535	655	1535	-	-	-	
TM 270L+Dryer	1535	655	1550	-	-	-	
TM 500L	1935	655	1665	-	-	-	
TM 500L+Dryer	1935	655	1680	1940	835	1835	

# Ceccato's heritage

Ceccato Aria Compressa is a product company that specializes in the design, production and sales of screw compressors and air treatment products like dryers and filters, within the Atlas Copco Group.

Atlas Copco is a world-leading business in more than 180 countries, a truly global company, that serves customers with its innovative compressors, vacuum solutions and air treatment systems, construction and mining equipment, power tools and assembly systems, with more than 44,000 committed employees in the Group who contribute to the success of the company.

Since 1936 the Ceccato name has represented a very simple and reliable product range, designed for an extensive variety of applications.

The stationary electric driven compressors produced by Ceccato have been largely distributed worldwide without any restrictions of ambient conditions or locations. The range of compressors is integrated with a wide selection of dryers and accessories in general, to make the Ceccato range of products an interesting business opportunity for any distributor worldwide. The attitude of Ceccato is to design and produce compressors according to the real market needs, in order to become a real reliable partner for any company who wants to establish solid and long-term relationships.



Contact your local representative:

[www.ceccato.com](http://www.ceccato.com)

6999100640



### CARE

Care is what service is all about: professional service by knowledgeable people, using high-quality original parts.

### TRUST

Trust is earned by delivering on our promises of reliable, uninterrupted performance and long equipment lifetime.

### EFFICIENCY

Equipment efficiency is ensured by regular maintenance. Efficiency of the service organization is how Original Parts and Service make the difference.

© 2021, Ceccato. All rights reserved. All mentioned brands, product names, company names, trademarks and service marks are the properties of their respective owners. Our products are constantly being developed and improved. We thus reserve the right to modify product specifications without prior notice. Pictures are not contractually binding.

